

# 55 MARTIN RD BADGERY'S CREEK WASTE RESOURCE RECOVERY FACILITY

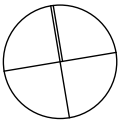
55 MARTIN ROAD  
BADGERY'S CREEK

PREPARED FOR

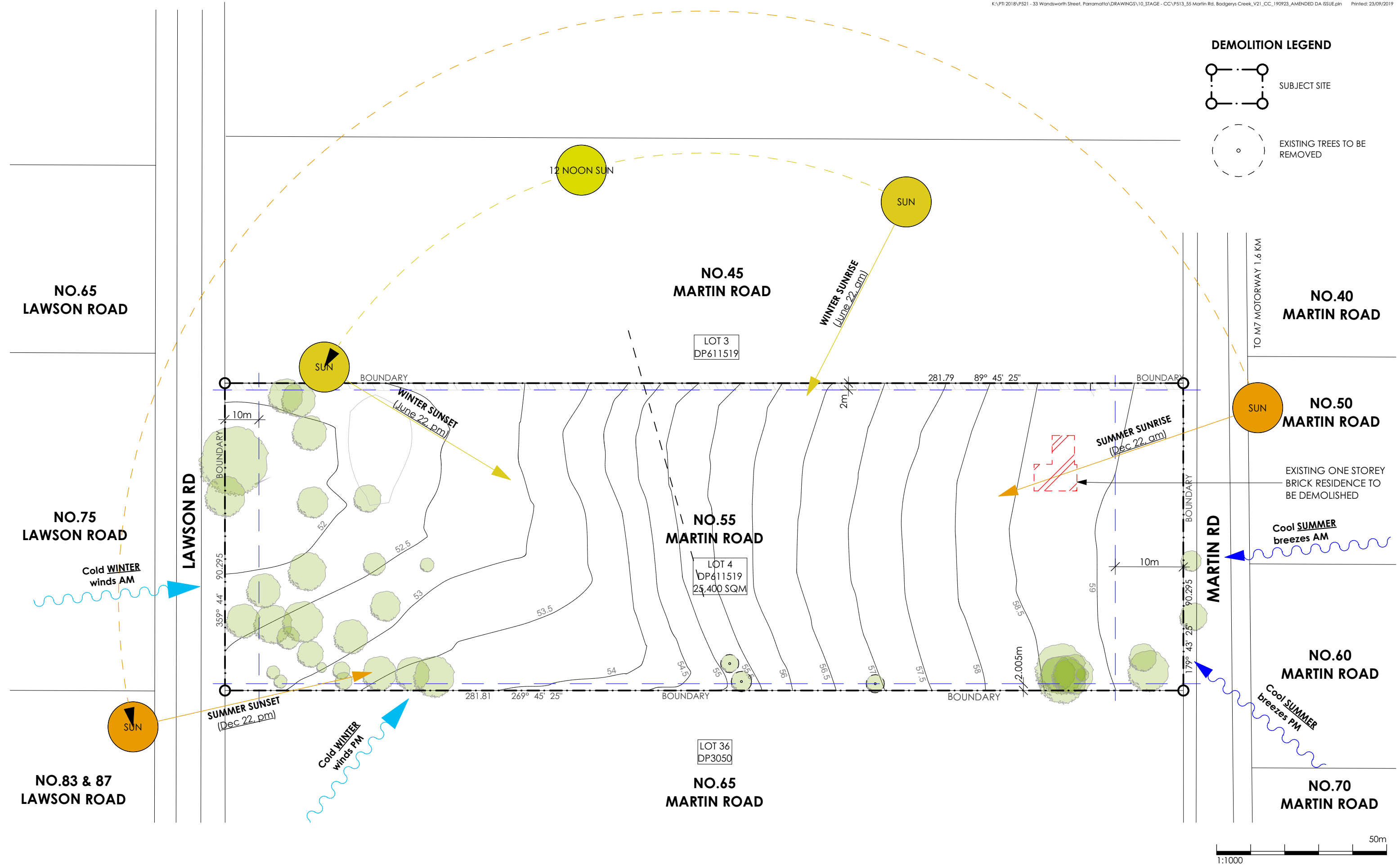
AMJ DEMOLITION & EXCAVATION

DRAWING LIST

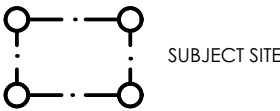
- 00 COVER SHEET
- 01 LOCATION PLAN
- 02 SITE ANALYSIS PLAN
- 03 SITE PLAN WITH APPROVED DA FOOTPRINT OVERLAYED
- 04 DETAILED SHED PLAN
- 05 DETAILED SITE PLAN (PART A) - LAWSON RD WEST
- 06 DETAILED SITE PLAN (PART B) - MARTIN RD EAST
- 07 SHED AMENITIES FLOOR PLANS
- 08 PROCESSING SHED ELEVATIONS
- 09 SECTION THRU PROCESSING SHED
- 10 SECTION THRU STOCKPILE BUNKER
- 11 NEW OFFICE BUILDING GROUND FLOOR PLAN
- 12 NEW OFFICE BUILDING ELEVATIONS EAST & WEST
- 13 NEW OFFICE BUILDING ELEVATIONS NORTH & SOUTH
- 14 TRUCK ENTRY DRIVEWAY RAMP SECTIONS
- 15 STAFF CARPARK DRIVEWAY RAMP SECTIONS
- 16 FENCE ELEVATIONS FOR ACOUSTIC
- 17 FENCE ELEVATIONS FOR ACOUSTIC
- 18 VISUAL IMPACT ASSESSMENT-LOCATION PLAN
- 19 VISUAL IMPACT ASSESSMENT-VIEW 1
- 20 VISUAL IMPACT ASSESSMENT-VIEW 2
- 21 VISUAL IMPACT ASSESSMENT-VIEW 3
- 22 VISUAL IMPACT ASSESSMENT-VIEW 4
- 23 VISUAL IMPACT ASSESSMENT-VIEW 5
- 24 VISUAL IMPACT ASSESSMENT-VIEW 6



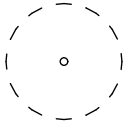




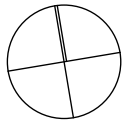
DEMOLITION LEGEND

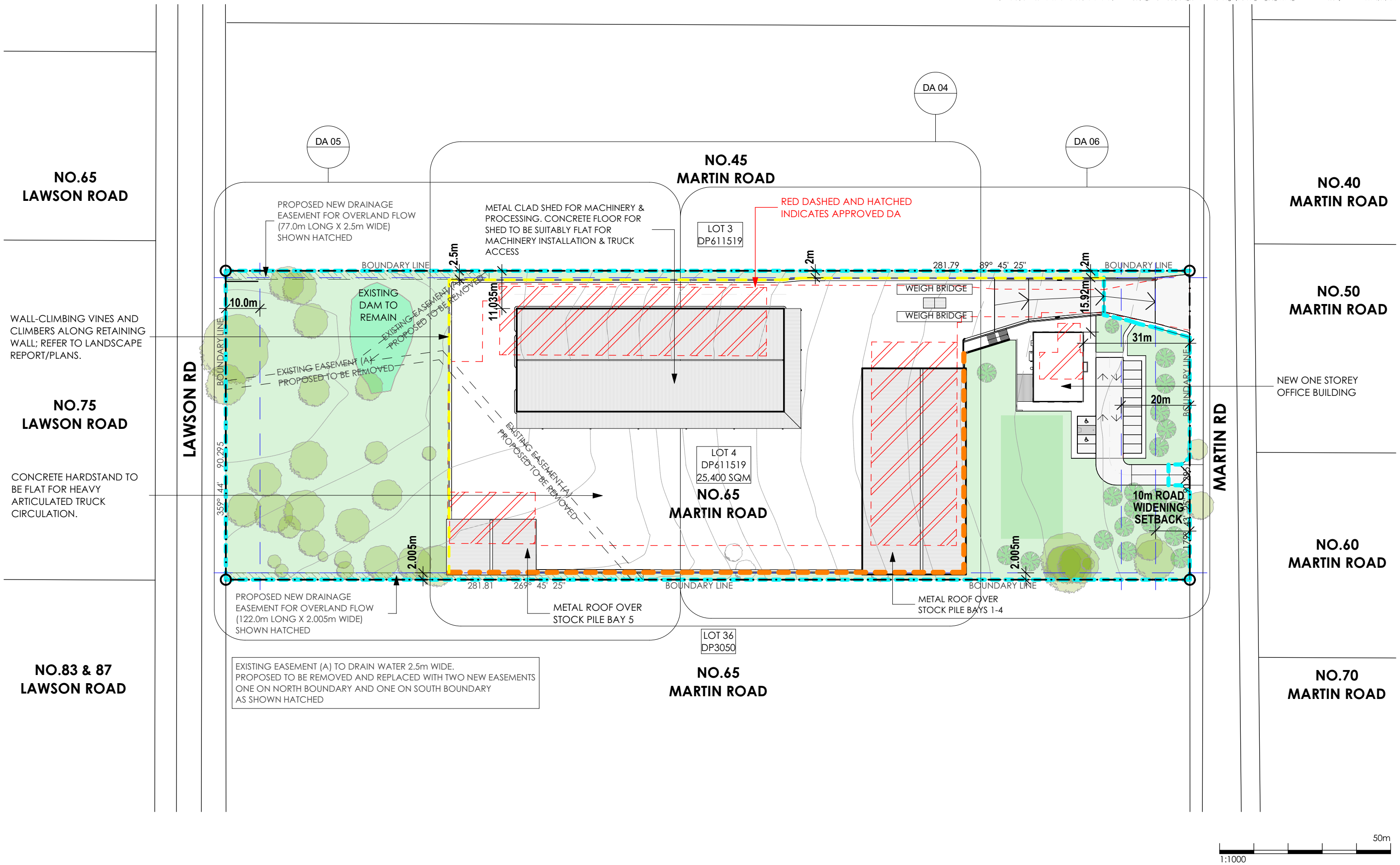


SUBJECT SITE

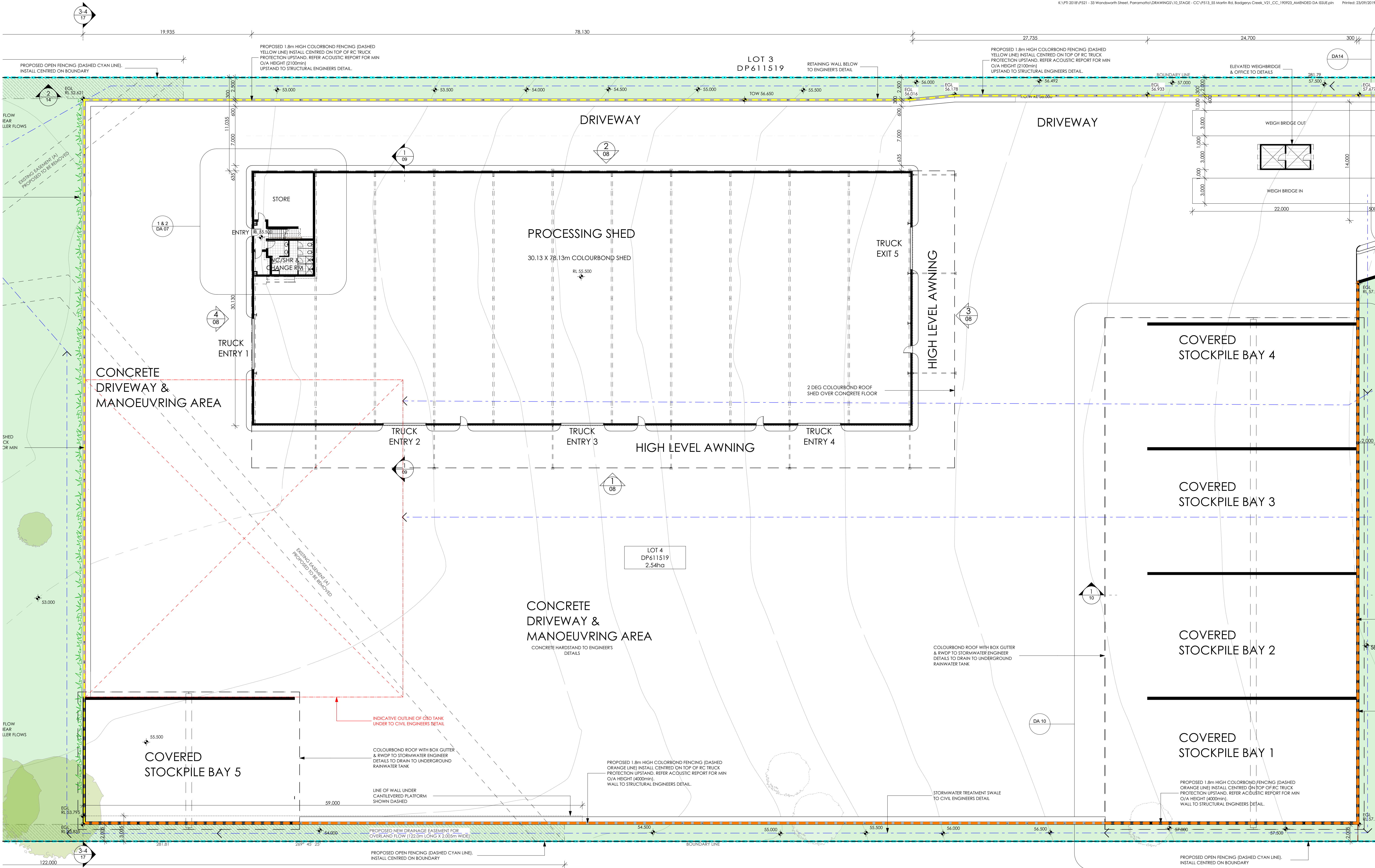


EXISTING TREES TO BE REMOVED









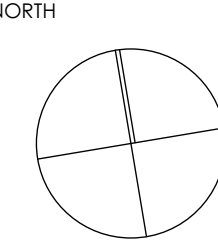
NOTE: TO BE PRINTED @ A1



Main Office: Level 2, 68 Sophia Street, Surry Hills NSW 2010  
Parramatta Office: Suite 4103, 11 Hassall Street, Parramatta NSW 2150  
+61 2 9283 0860 | www.ptiarchitecture.com.au  
Nominated Registered Architect: Peter Israel (reg no 5094)  
ABN 90 050 071 022

REV	DESCRIPTION	BY	CHK	DATE	CLIENT
A	DRAWING No. RE-USED, ISSUE FOR PRE DA	DD	PI	23.07.2019	AMJ DEMOLITION & EXCAVATION
B	SOUTH SETBACK ALTERED, ISSUE FOR INFORMATION	DD	PI	16.08.2019	
C	TRUCK ENTRY 1 WIDTH ALTERED, SHEET RENAMED	DD	PI	29.08.2019	
D	ISSUE FOR CONSULTANT REVIEW	DD	PI	16.09.2019	
E	ISSUE FOR AMENDMENT TO APPROVED DA-263/2018	DD	PI	23.09.2019	

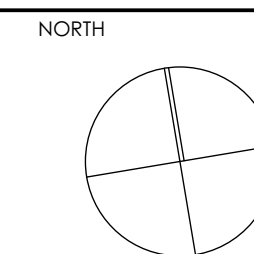
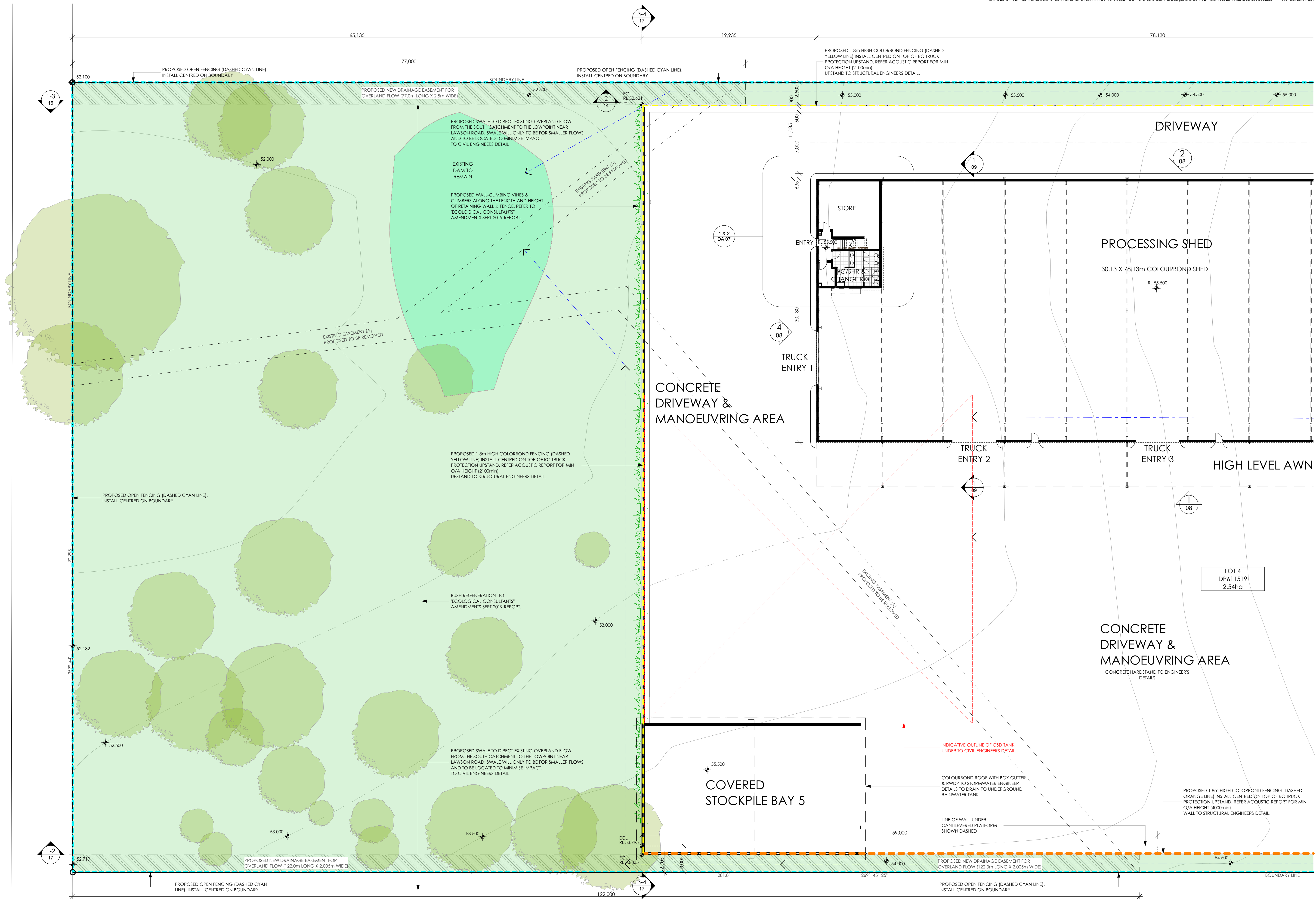
PROJECT  
55 MARTIN RD BADGERYS CREEK  
WASTE RESOURCE RECOVERY FACILITY  
DRAWING  
DETAILED SHED PLAN



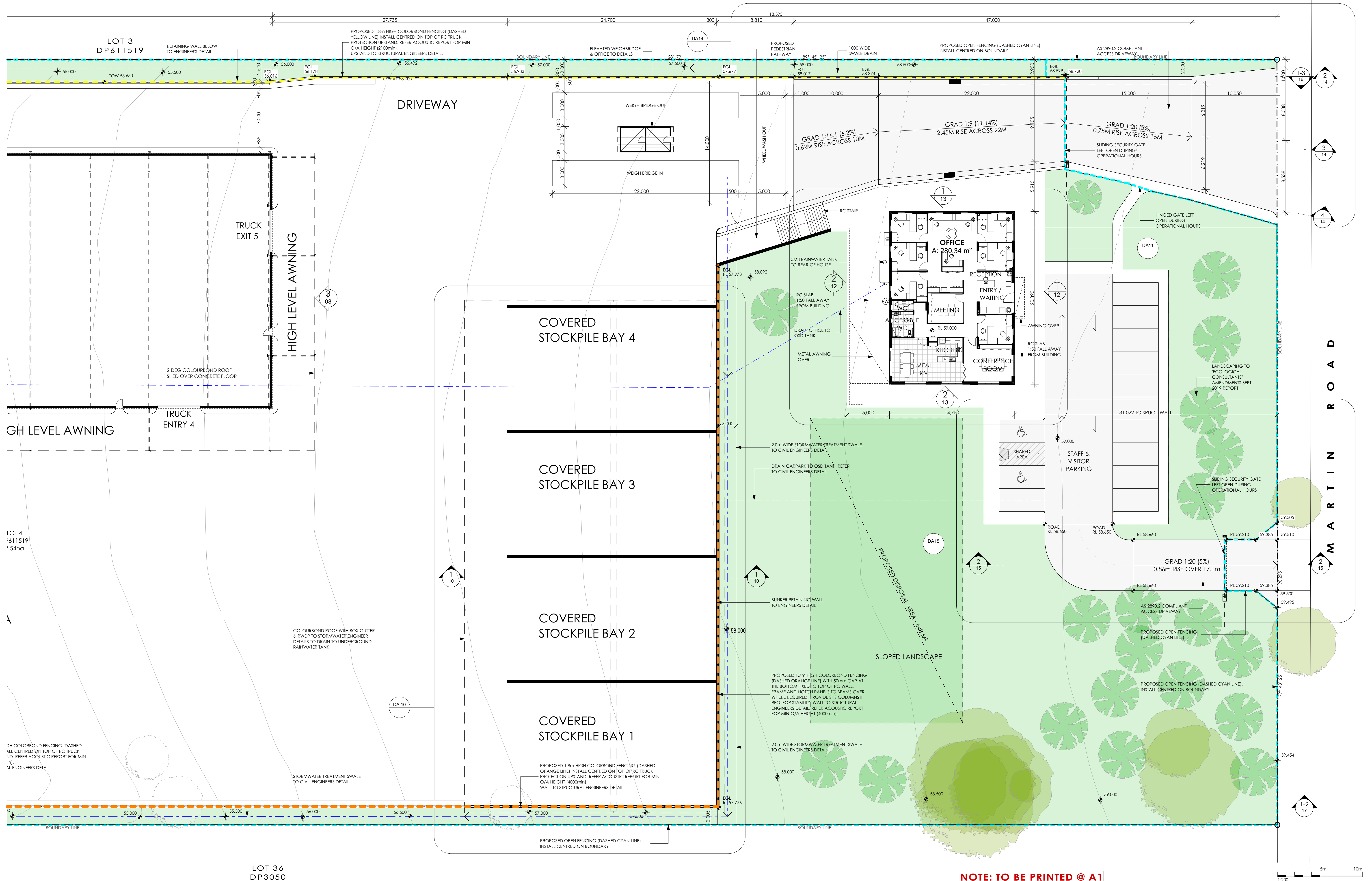
DRAWN DD  
CHECKED PI  
SCALE 1:200 @ A1 1:400 @ A3  
PROJECT No PS13  
DA 04 E  
stage. dwg no. revision



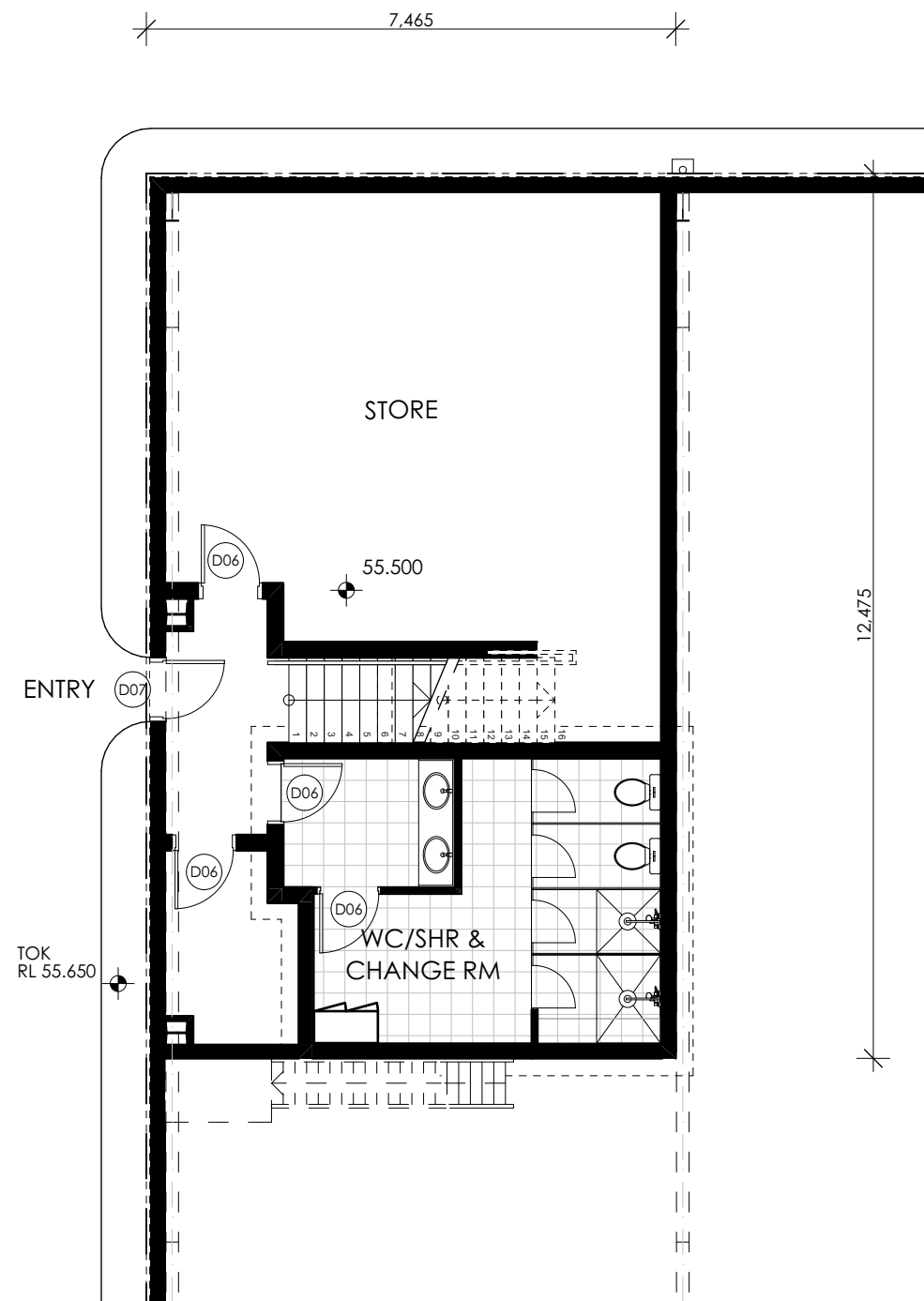
LAWSON ROAD



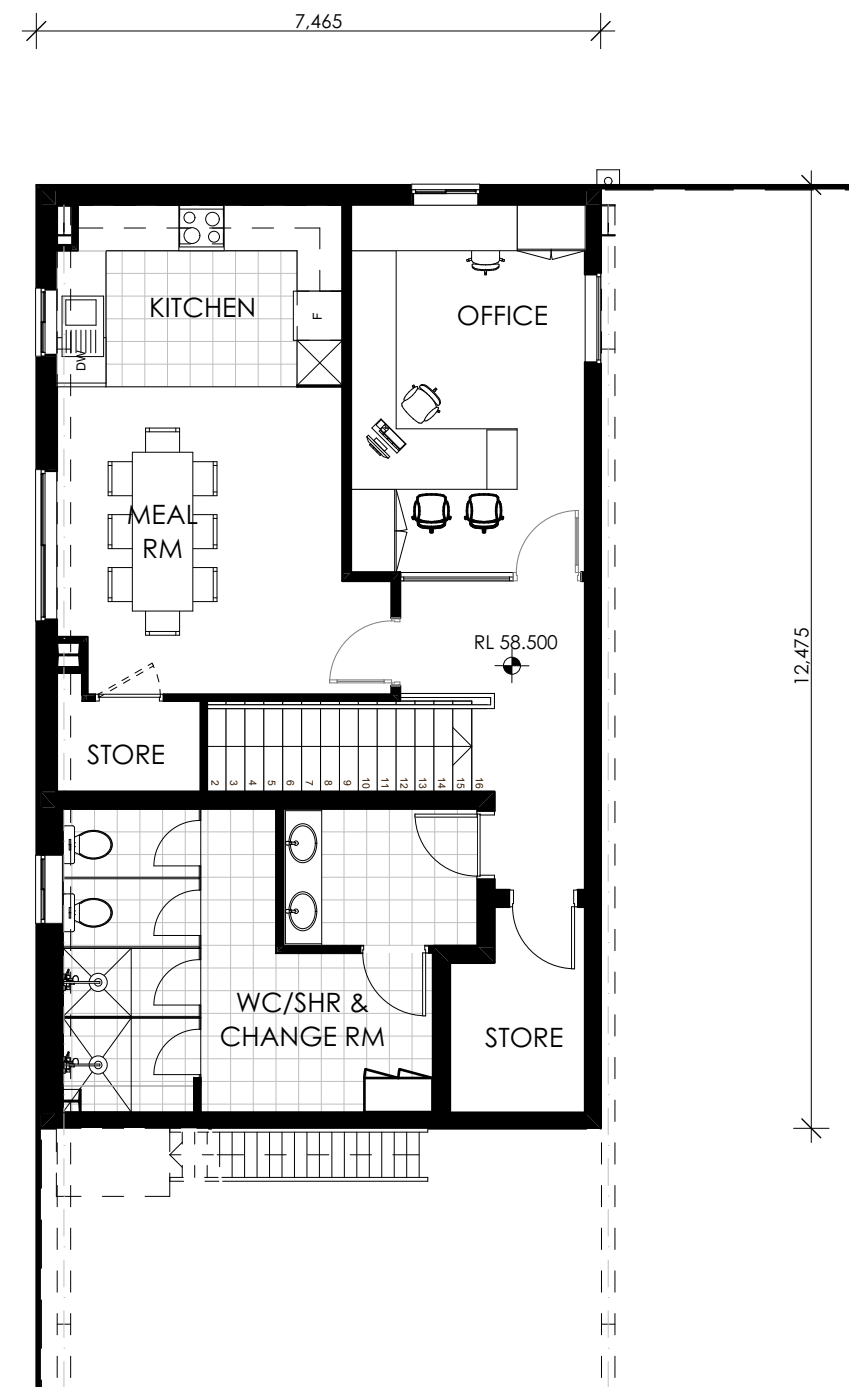




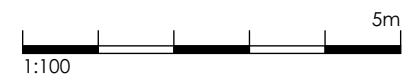
NOTE: TO BE PRINTED @ A1



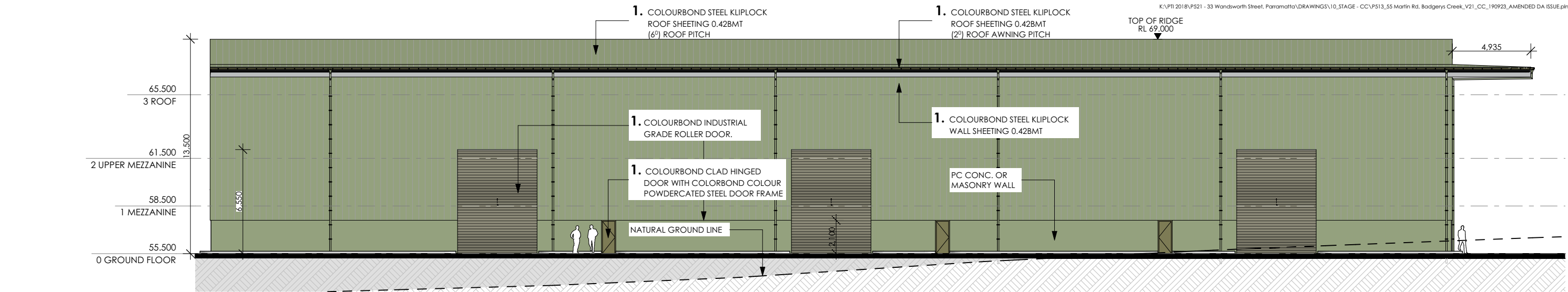
1 SHED AMENITIES GROUND FLOOR PLAN  
1:100



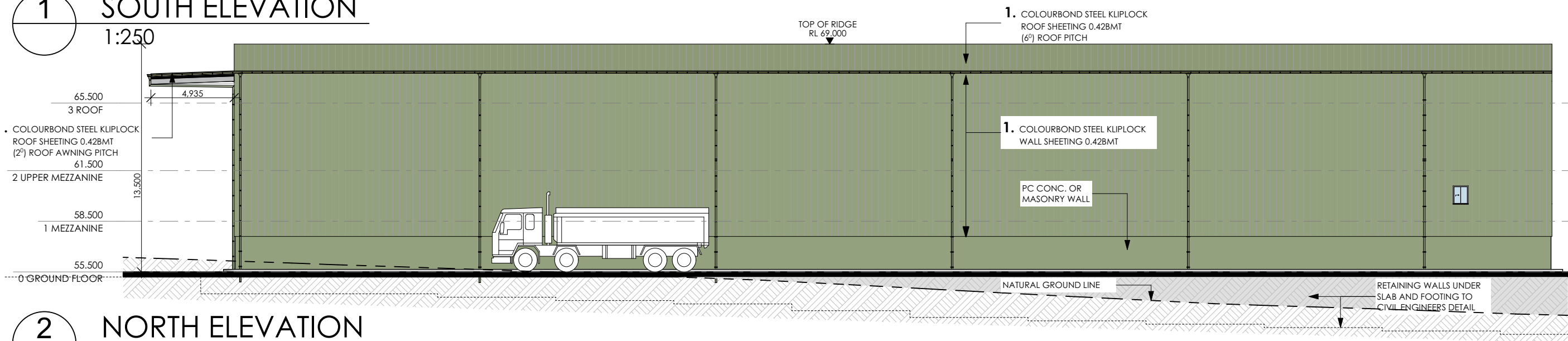
2 SHED AMENITIES 1ST FLOOR PLAN  
1:100



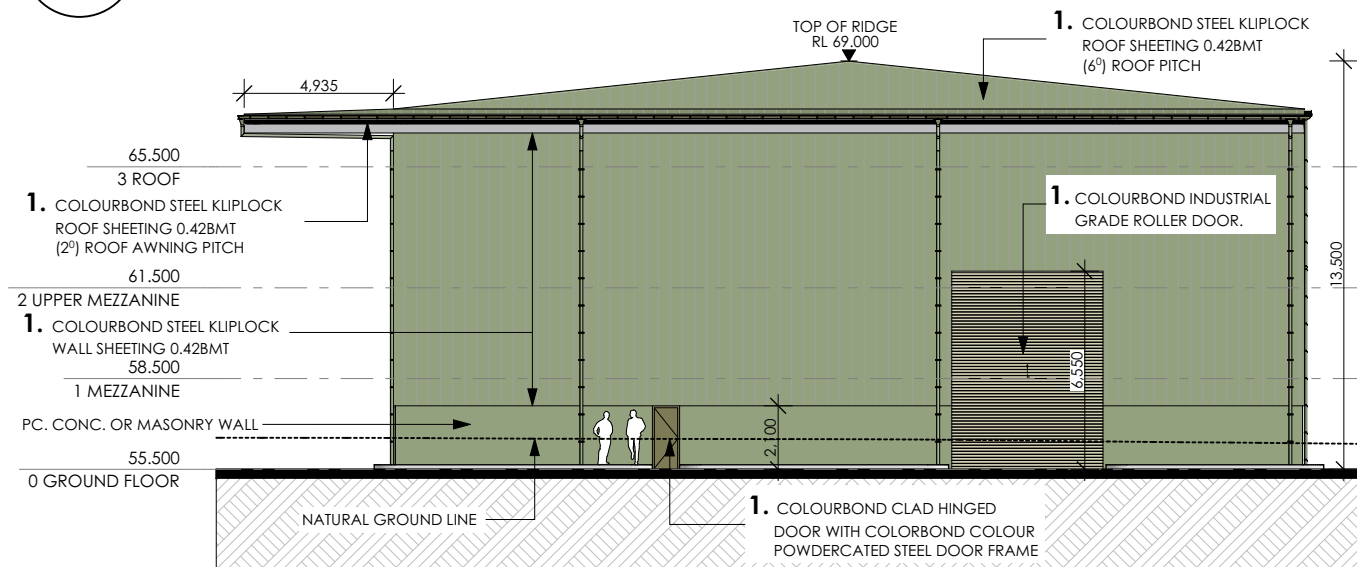




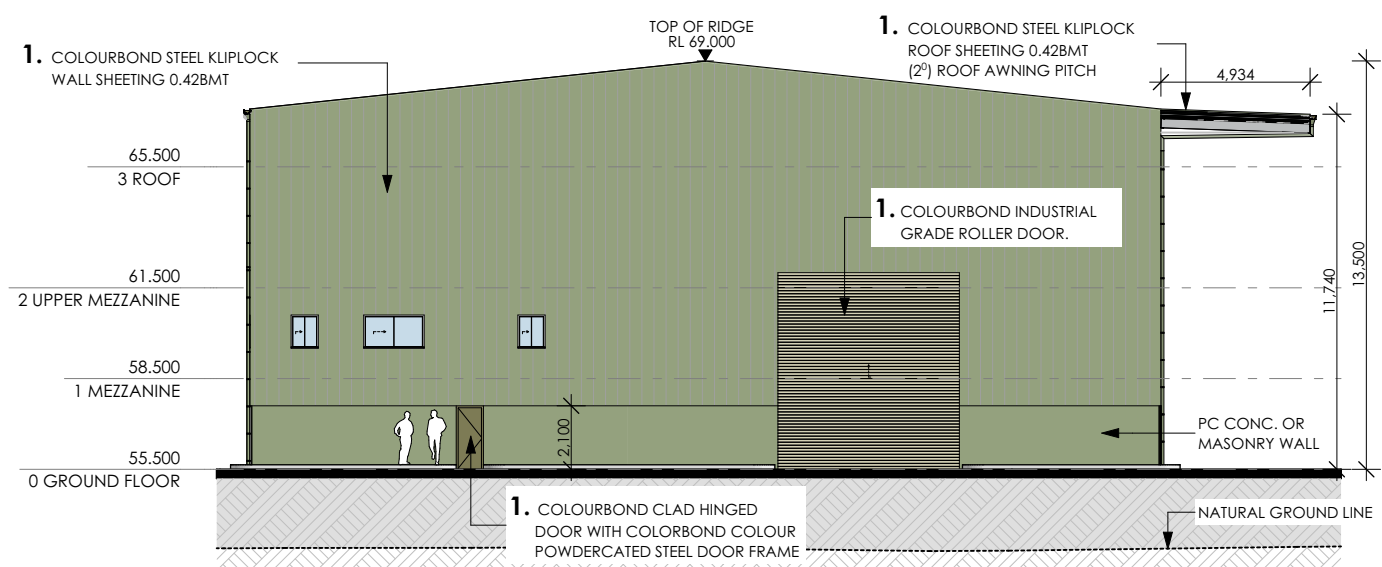
1 SOUTH ELEVATION  
1:250



2 NORTH ELEVATION  
1:250



3 EAST ELEVATION  
1:250

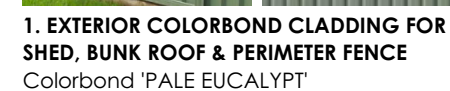


4 WEST ELEVATION  
1:250



1. EXTERIOR COLORBOND CLADDING FOR SHED, BUNK ROOF & PERIMETER FENCE  
Colorbond 'PALE EUCALYPT'





NORTH POINT: DRAWN BY: VW / DD

CHECKED BY: PI

SCALE: 1:100, 1:1 @ A3

PROJECT No: P513

# DA

stage.

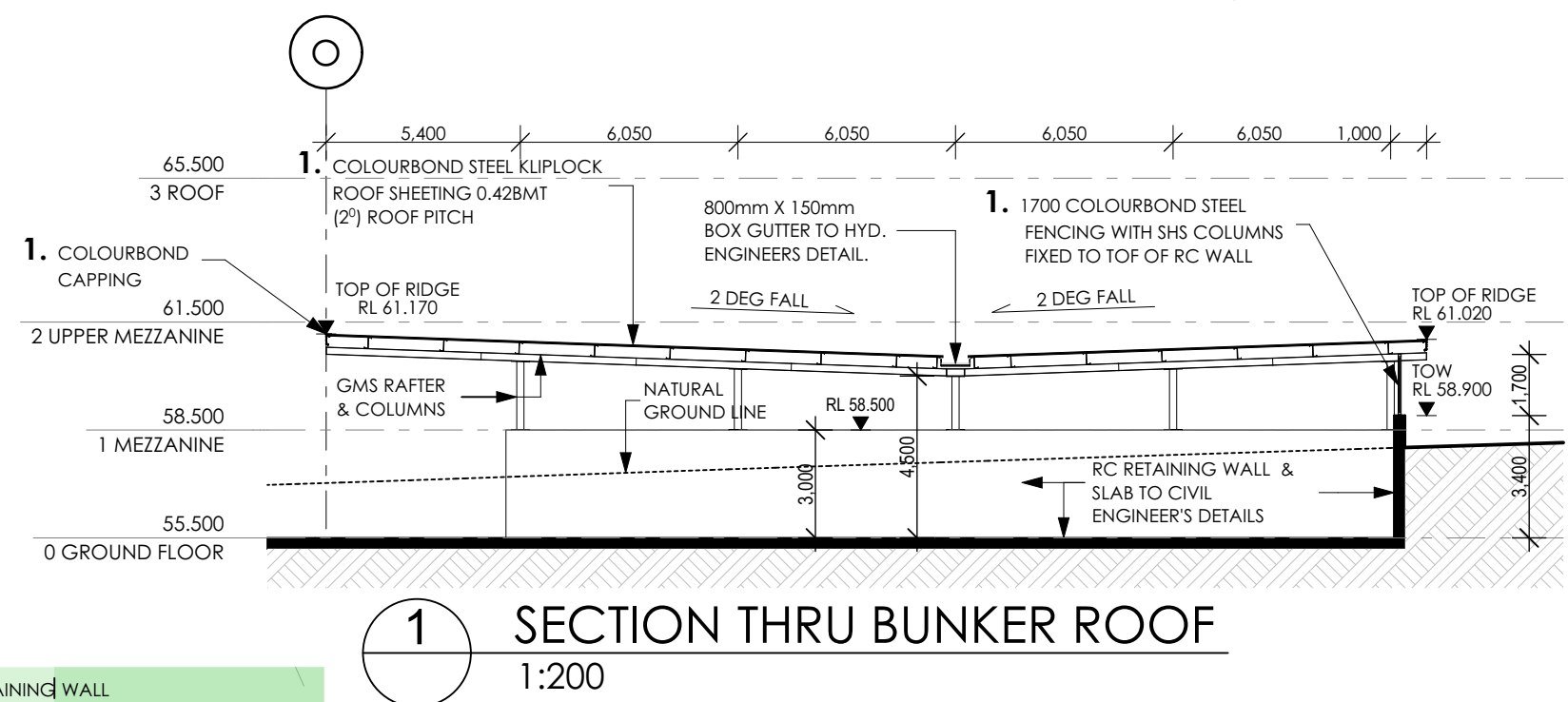
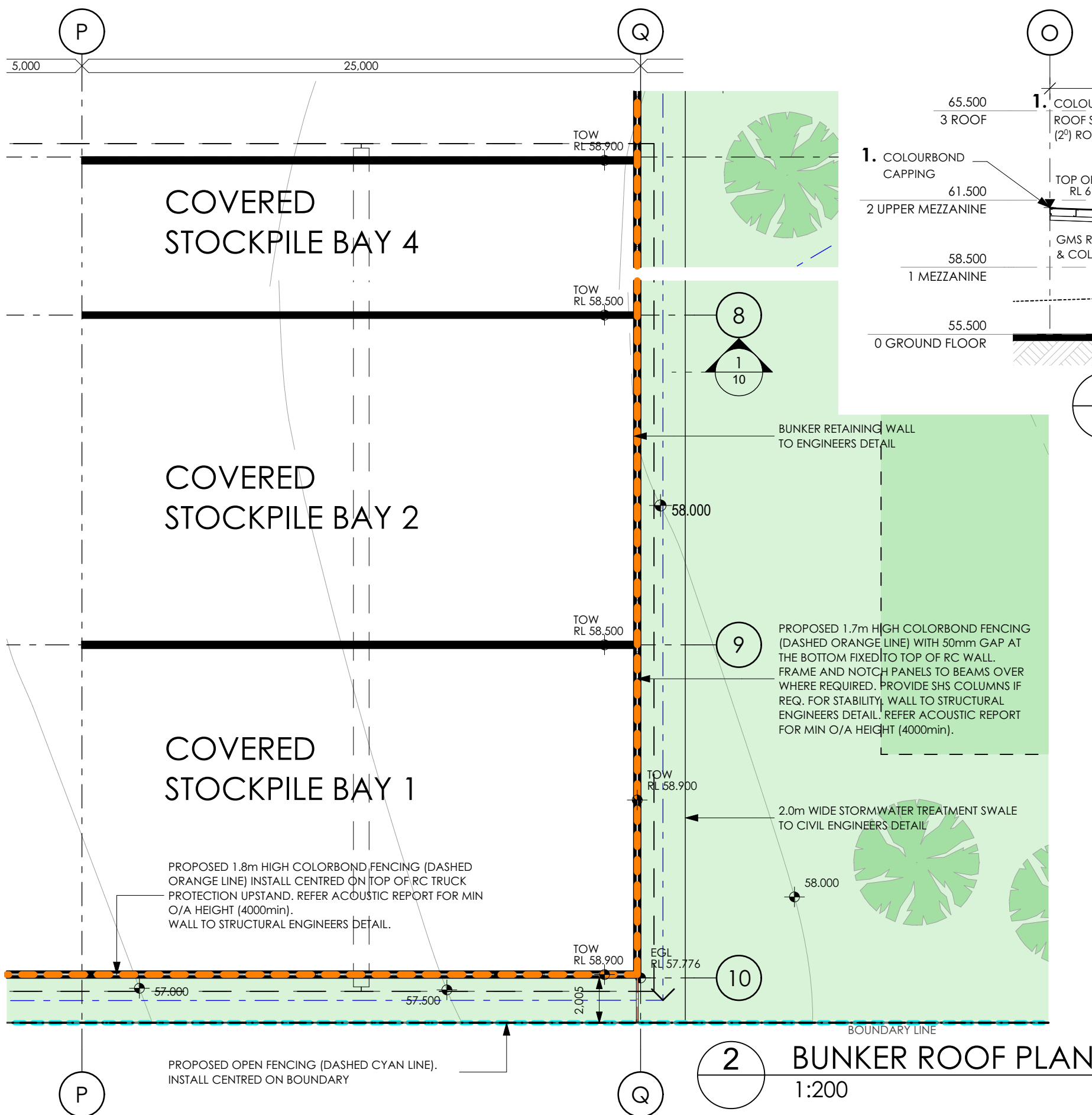
# 09

dwa no.

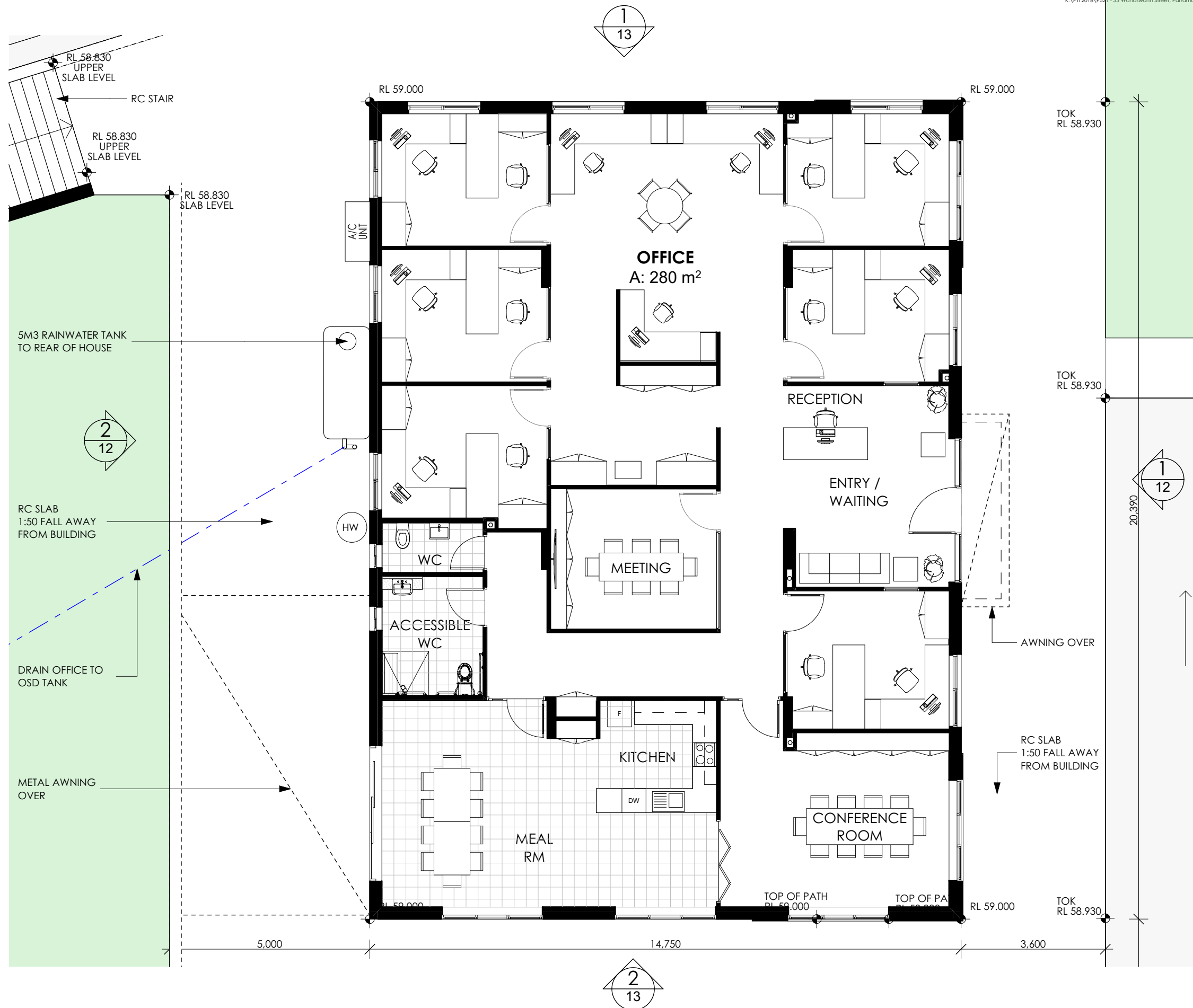
# C

revision

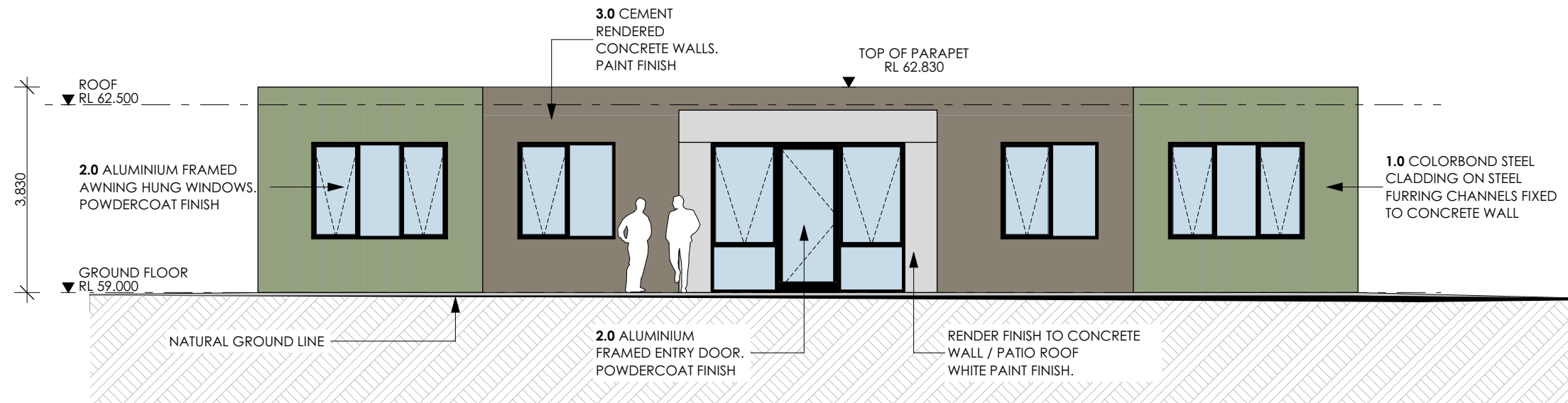




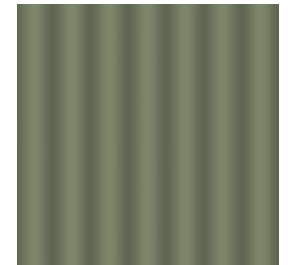
**1. EXTERIOR COLORBOND CLADDING FOR SHED, BUNK ROOF & PERIMETER FENCE**  
Colorbond 'PALE EUCALYPT'







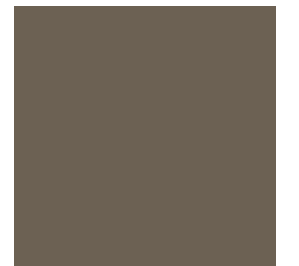
**1 EAST ELEVATION NEW OFFICE BUILDING**  
1:100



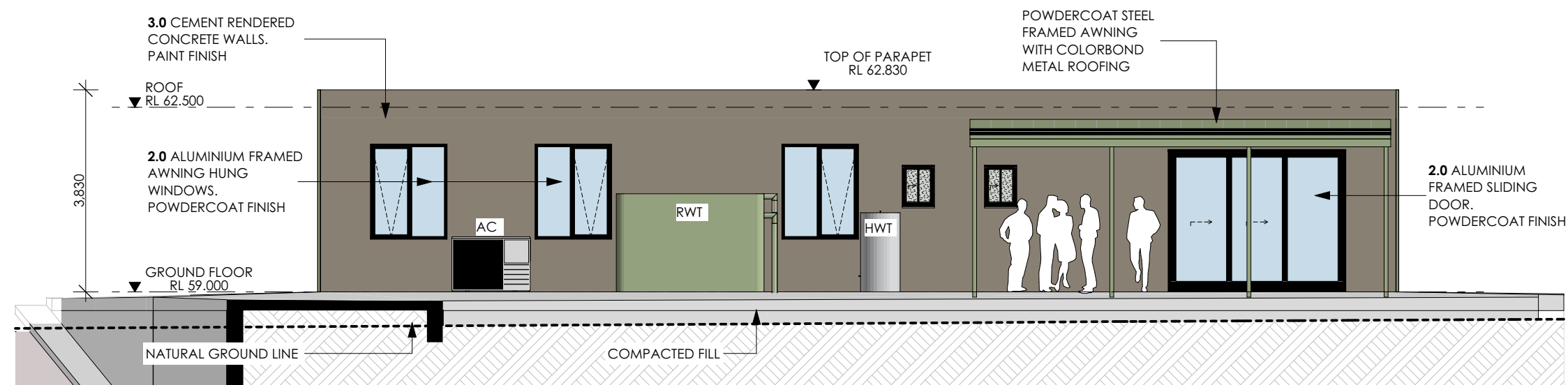
**1. EXTERIOR COLORBOND CUSTOM-ORB CLADDING**  
Colorbond 'PALE EUCALYPT'



**2. ALUMINIUM WINDOW & DOOR FRAMES**  
Colorbond 'Monument'

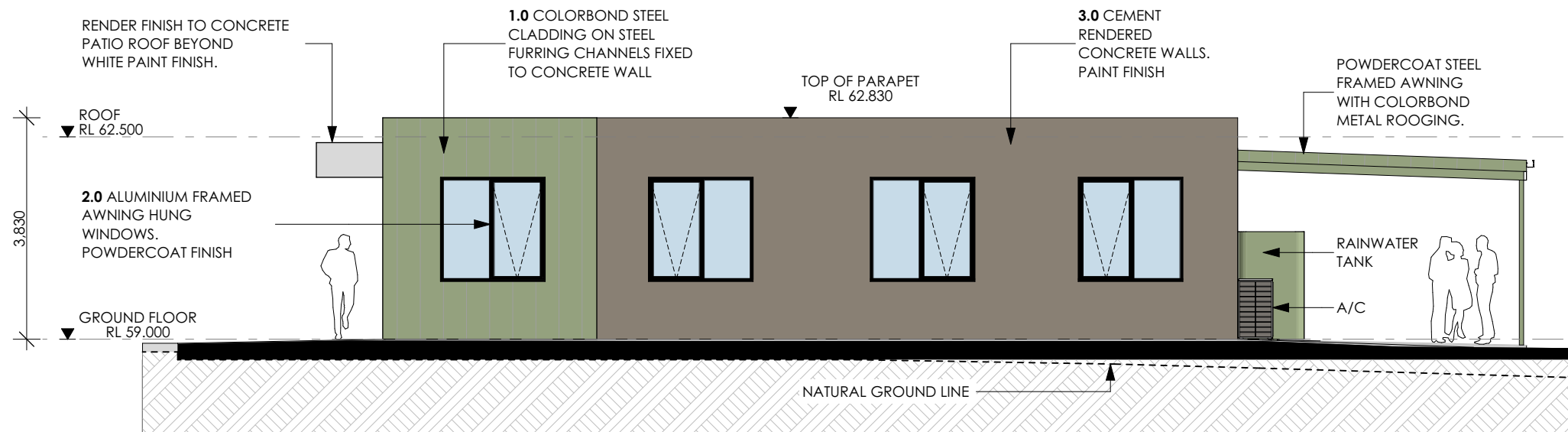


**3. RENDERED WALL PAINT FINISH**  
Colorbond 'Jasper'

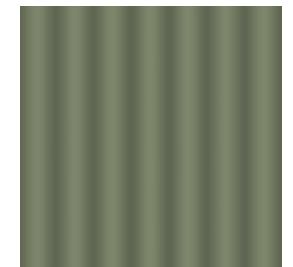


**2 WEST ELEVATION NEW OFFICE BUILDING**  
1:100

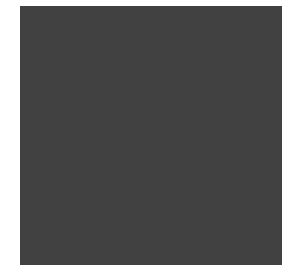




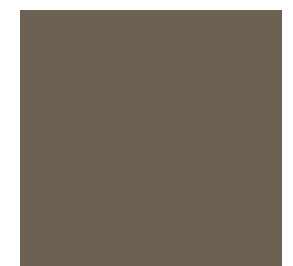
**1 NORTH ELEVATION NEW OFFICE BUILDING**  
1:100



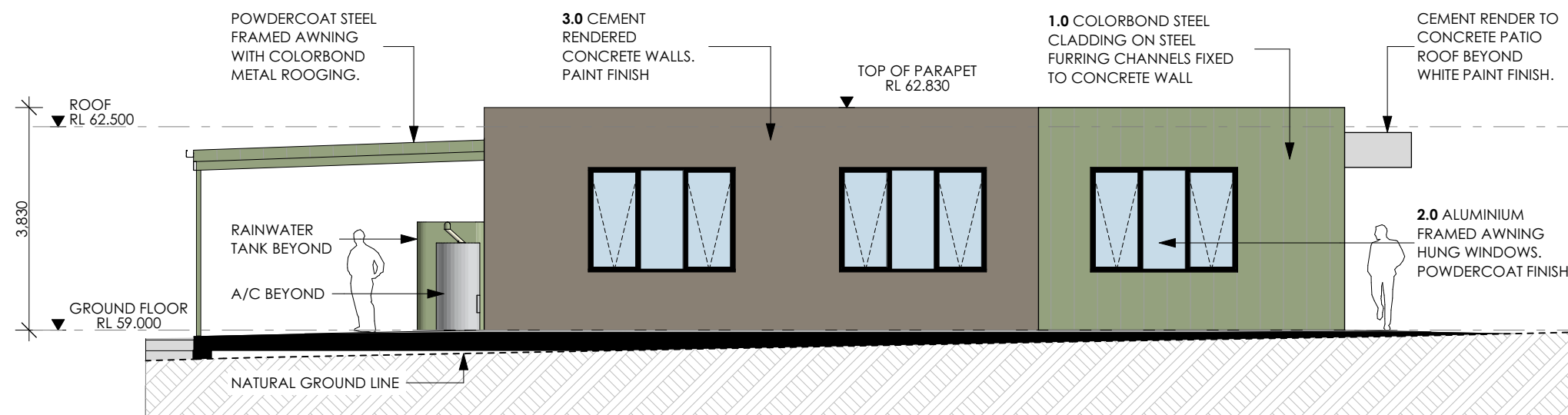
**1. EXTERIOR COLORBOND CUSTOM-ORB CLADDING**  
Colorbond 'PALE EUCALYPT'



**2. ALUMINIUM WINDOW & DOOR FRAMES**  
Colorbond 'Monument'

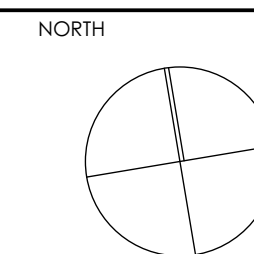
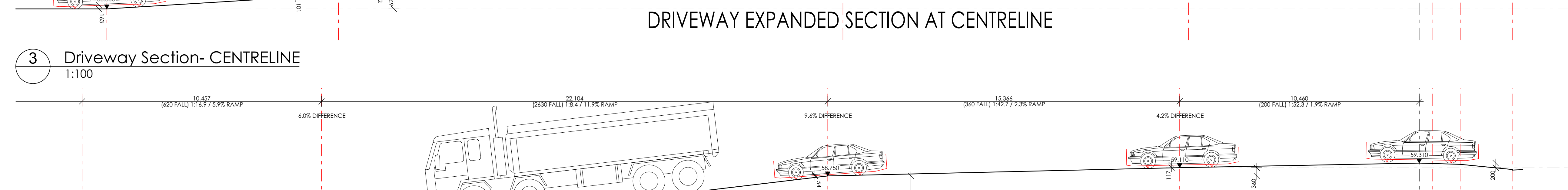
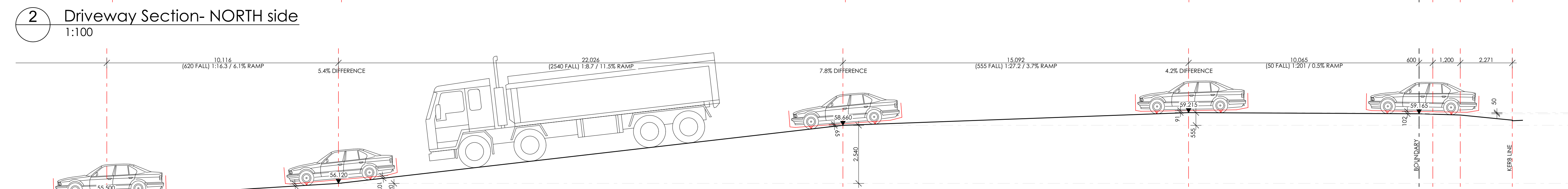
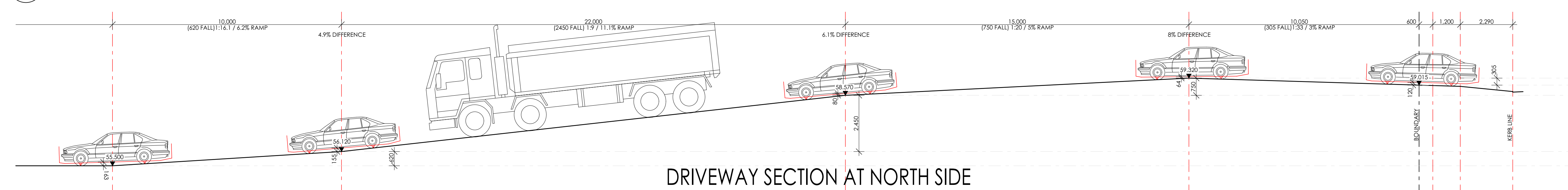
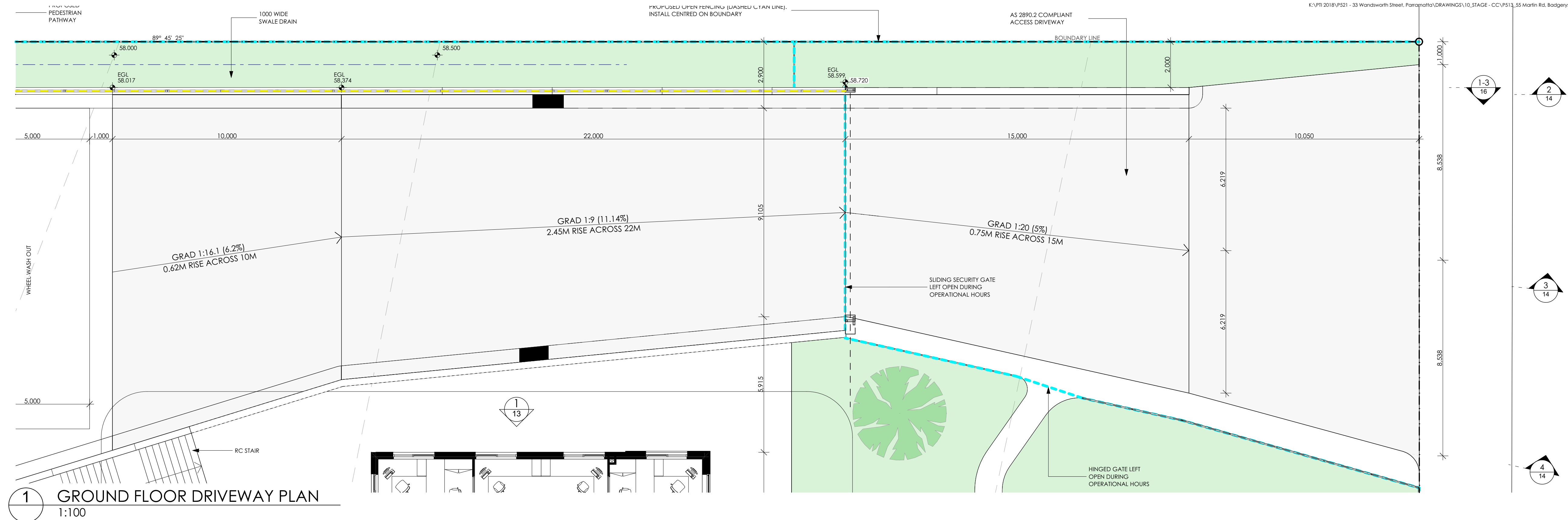


**3. RENDERED WALL PAINT FINISH**  
Colorbond 'Jasper'

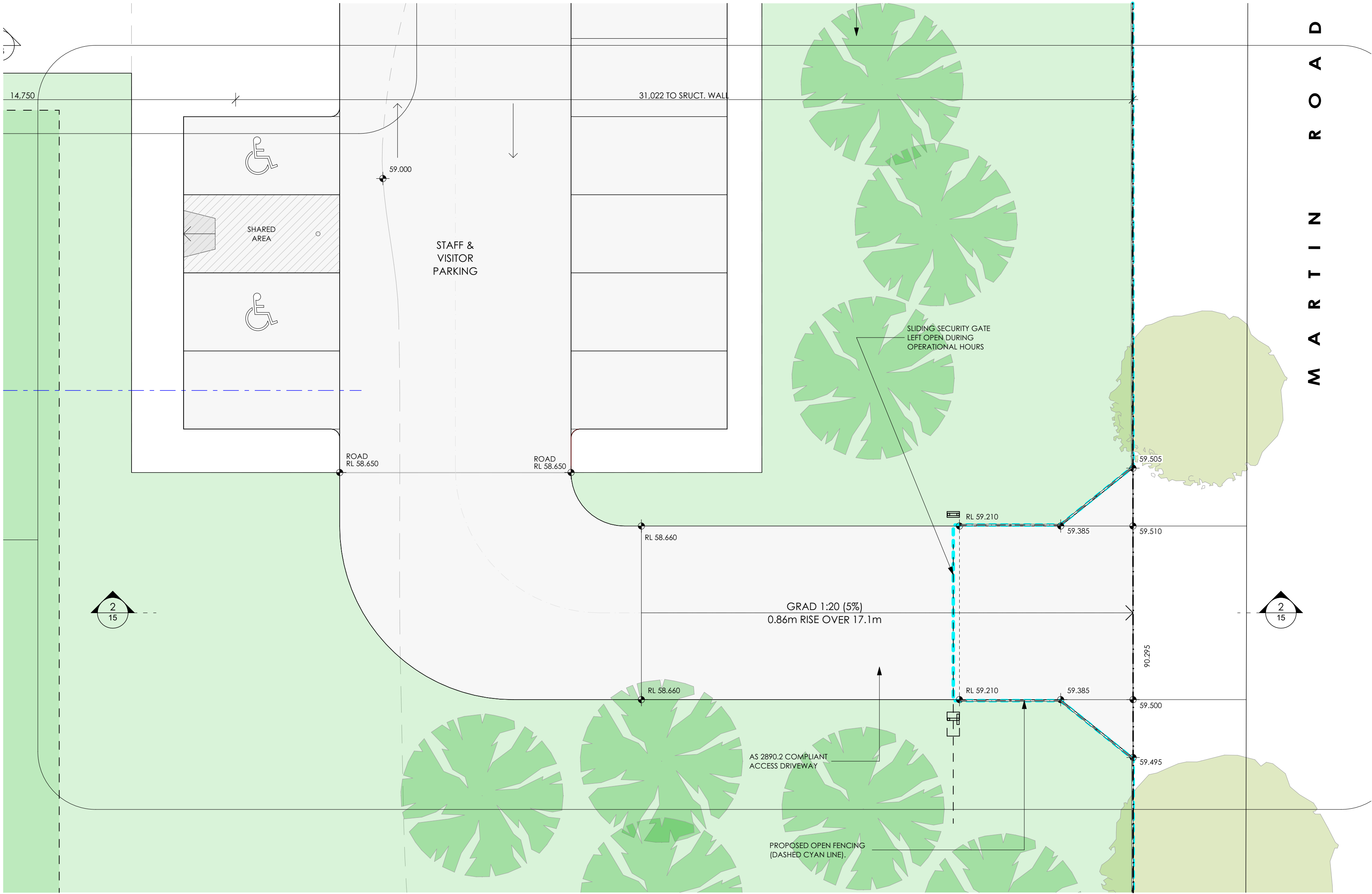


**2 SOUTH ELEVATION NEW OFFICE BUILDING**  
1:100

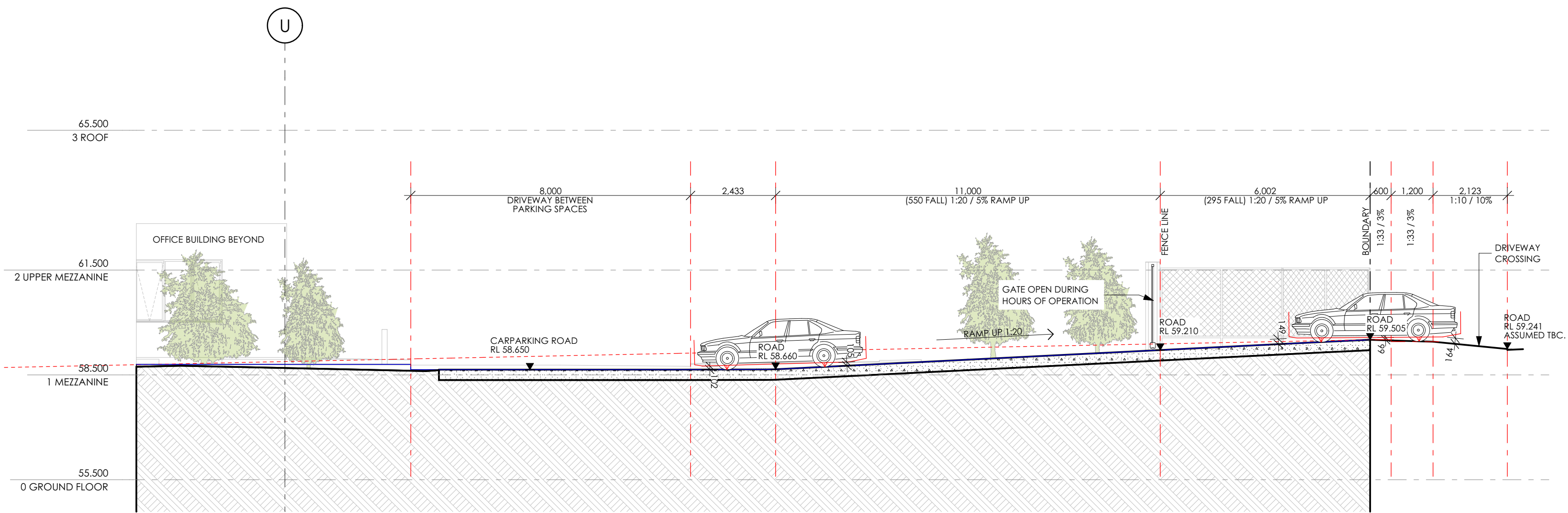




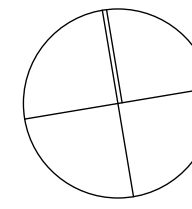


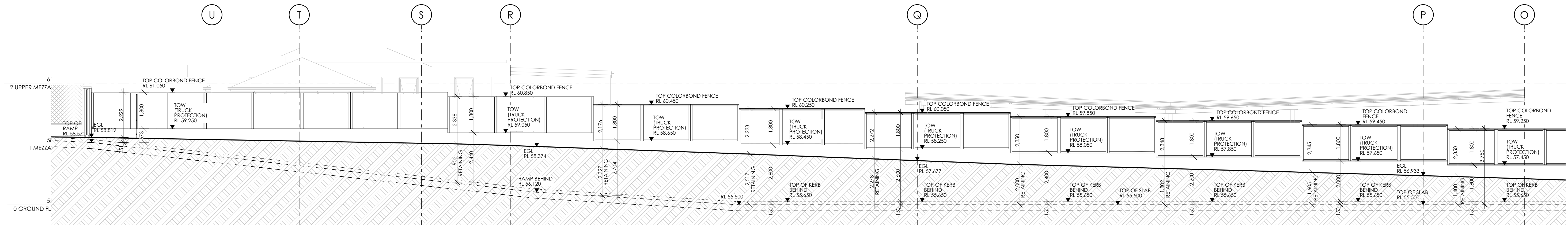


1 GROUND FLOOR DRIVEWAY PLAN  
1:100

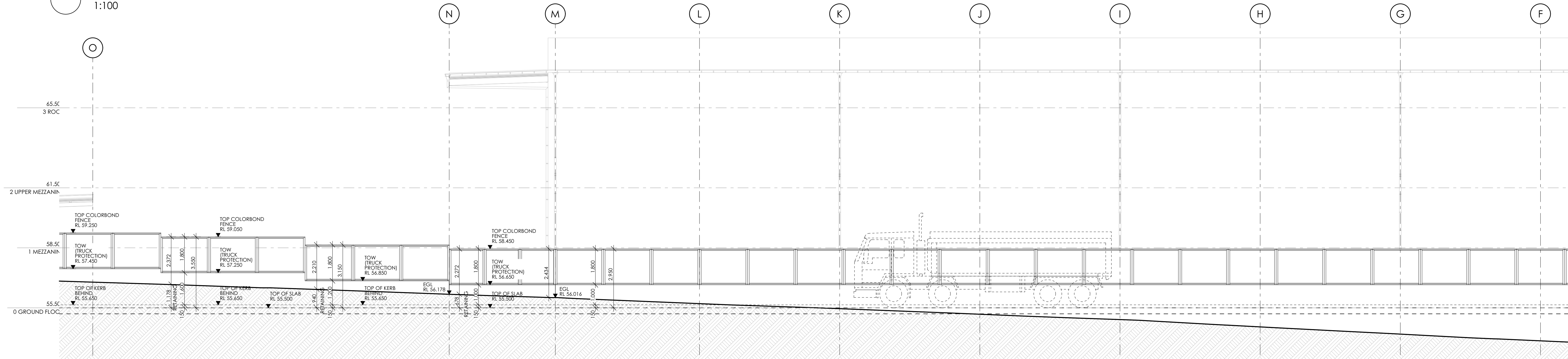


2 Driveway Section- CENTRELINE  
1:100

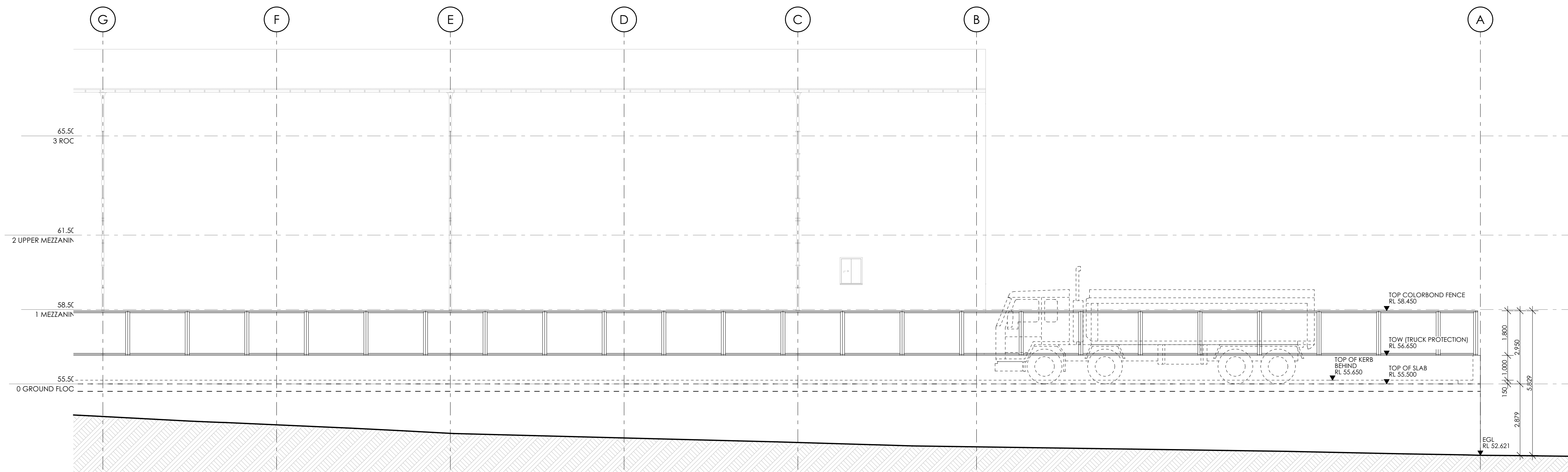




1 NORTH WALL ELEVATION - EAST CORNER  
1:100

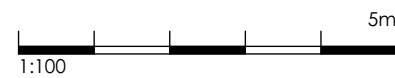


2 NORTH WALL ELEVATION - MIDDLE SECTION  
1:100

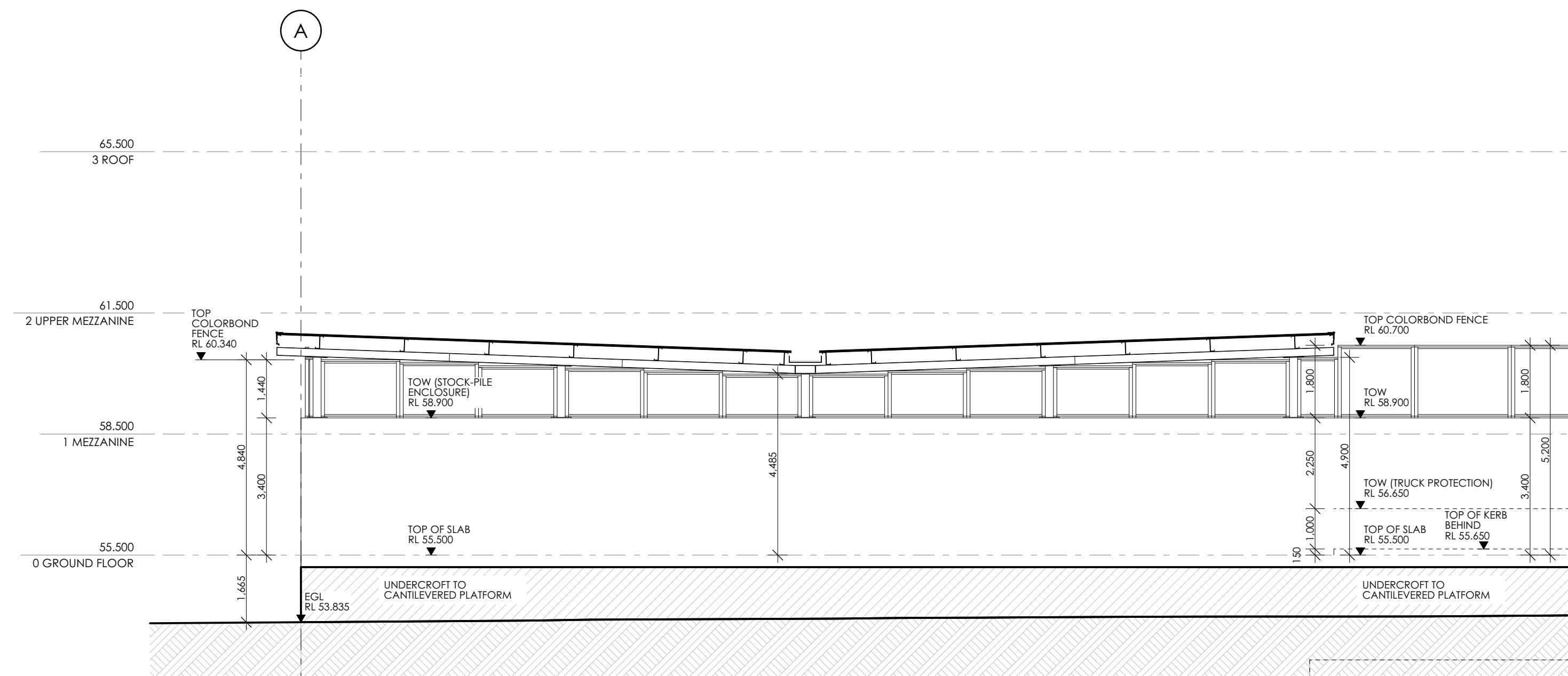


3 NORTH WALL ELEVATION - WEST CORNER  
1:100

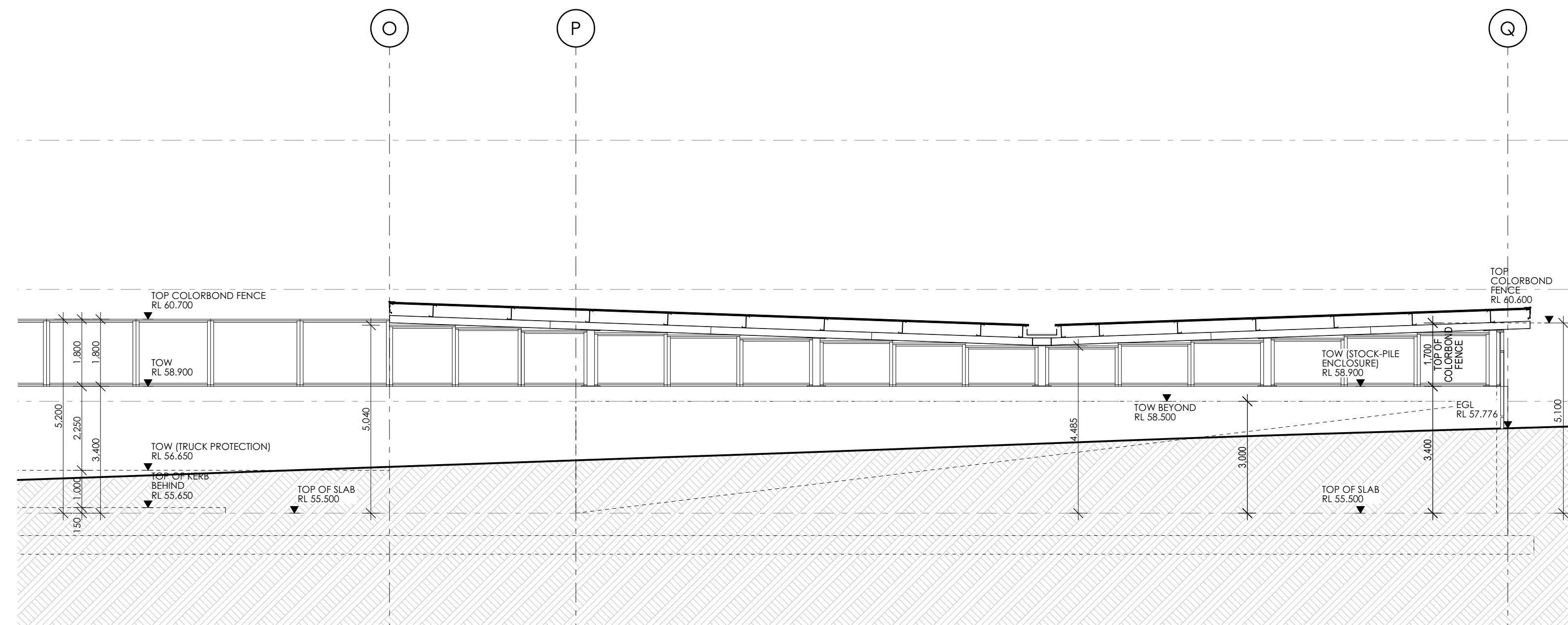
NOTE: LEVELS AND DIMENSIONS  
SUBJECT TO ACOUSTIC REPORT  
MINIUM HEIGHT REQUIREMENTS



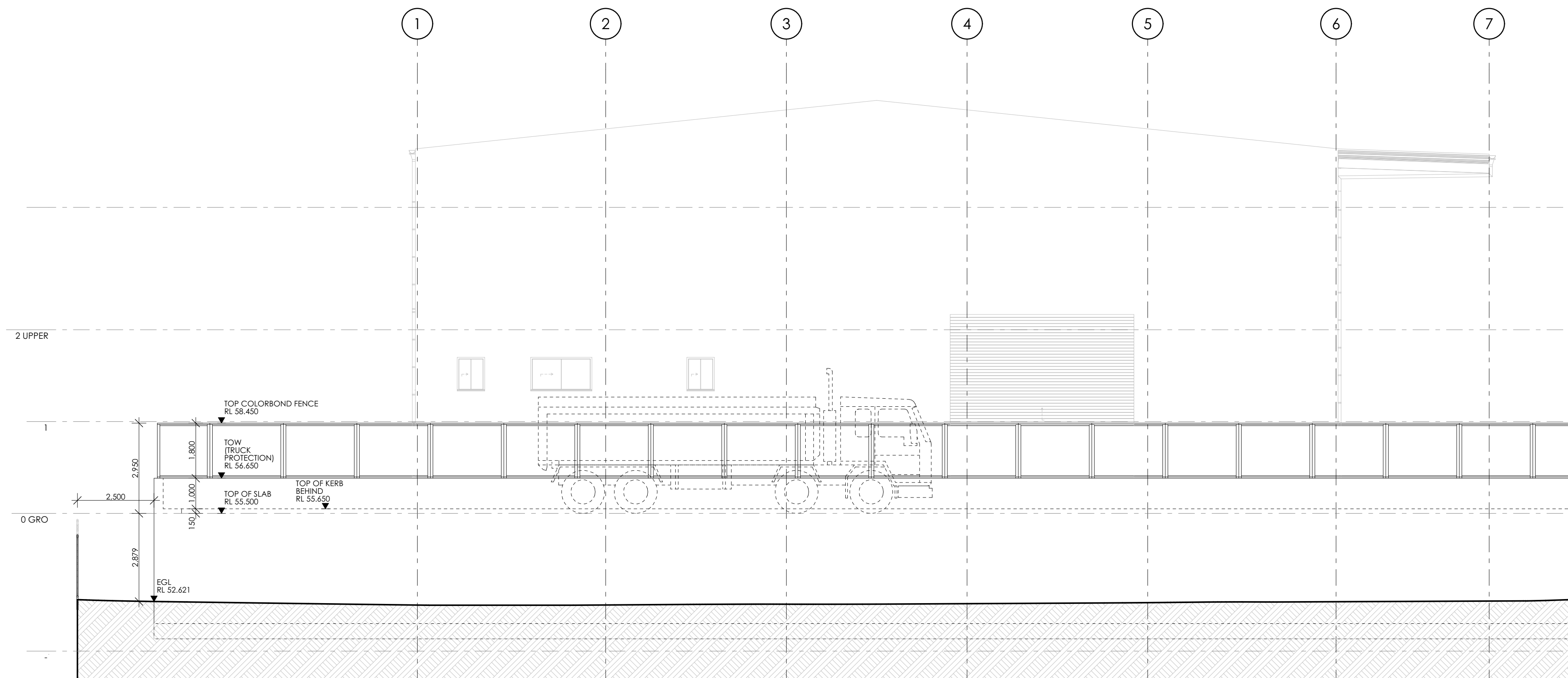




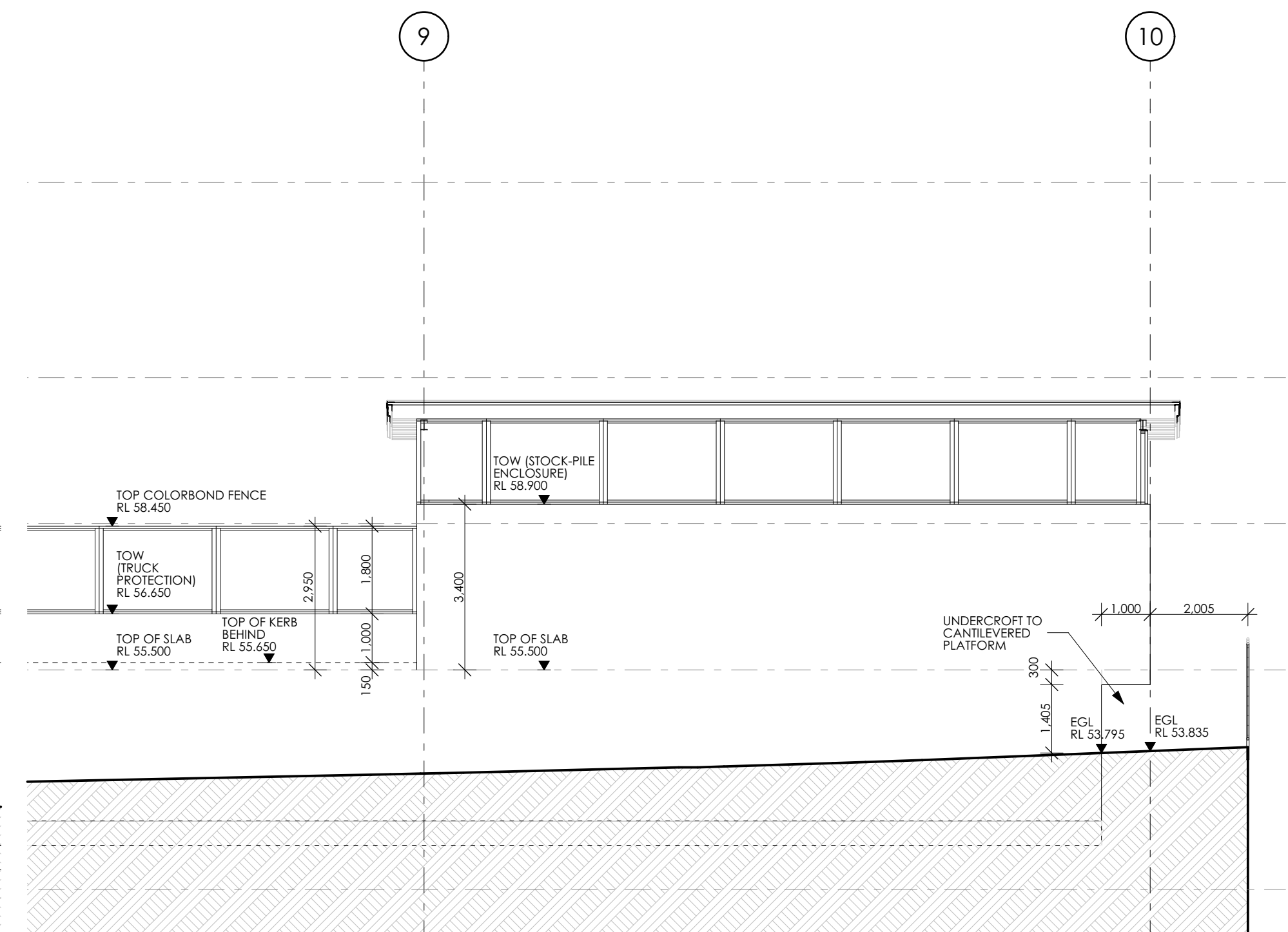
1 SOUTH WALL ELEVATION - WEST CORNER  
1:100



2 SOUTH WALL ELEVATION - EAST CORNER  
1:100



3 WEST WALL ELEVATION - NORTH CORNER  
1:100



4 WEST WALL ELEVATION - SOUTH CORNER  
1:100

NOTE: LEVELS AND DIMENSIONS  
SUBJECT TO ACOUSTIC REPORT  
MINIUM HEIGHT REQUIREMENTS







1 VIEW 1



1 VIEW 2



1 VIEW 3

METHODOLOGY FOR POTENTIAL VISUAL IMPACT ASSESSMENT

The location and orientation of the proponent is noted via GPS using navigation google app - this secures the first reference point of the subject image taken from the camera. 2 more reference points (such as a tree indicated on the survey, or the fencing post at the corner of the site as per survey) are noted. The distances and elevational differences between those reference points allows the render to digitally and accurately superimpose a computer-aided design 3D model upon the digital file to produce the individual view analysis.



4 LOCATION PLAN



1 VIEW 6



1 VIEW 5



1 VIEW 4





1

VIEW 1

REV	DESCRIPTION
A	ISSUE FOR INFORMATION
B	ISSUE FOR INFORMATION
C	VIEW REGENERATED TO AMENDED SCHEME. ISSUED FOR AMENDMENT TO APPROVED DA-263/2018

BY	DATE
VW	12.03.2018
VW	13.03.2018
DD	23.09.2019

CLIENT:  
**AMJ DEMOLITION &  
EXCAVATION**

PROJECT TITLE:  
**55 MARTIN RD BADGERY'S CREEK  
WASTE RESOURCE RECOVERY FACILITY**

DRAWING TITLE:  
**VISUAL IMPACT ASSESSMENT-VIEW 1**

NORTH POINT:	DRAWN BY:	VW / DD
	CHECKED BY:	PI
	SCALE:	N.T.S. @ A3
	PROJECT No:	P513
DA	19	C
stage.	dwg no.	revision





1

VIEW 2





1

VIEW 3





1

VIEW 4

REV	DESCRIPTION
A	ISSUE FOR INFORMATION
B	ISSUE FOR INFORMATION
C	VIEW REGENERATED TO AMENDED SCHEME. ISSUED FOR AMENDMENT TO APPROVED DA-263/2018

BY	DATE
VW	12.03.2018
VW	13.03.2018
DD	23.09.2019

CLIENT:  
**AMJ DEMOLITION &  
EXCAVATION**

PROJECT TITLE:  
**55 MARTIN RD BADGERY'S CREEK  
WASTE RESOURCE RECOVERY FACILITY**

DRAWING TITLE:  
**VISUAL IMPACT ASSESSMENT-VIEW 4**

NORTH POINT:	DRAWN BY:	VW / DD
	CHECKED BY:	PI
	SCALE:	N.T.S. @ A3
	PROJECT No:	P513
DA	22	C
stage.	dwg no.	revision





1

VIEW 5

REV	DESCRIPTION
A	ISSUE FOR INFORMATION
B	ISSUE FOR INFORMATION
C	VIEW REGENERATED TO AMENDED SCHEME. ISSUED FOR AMENDMENT TO APPROVED DA-263/2018

BY	DATE
VW	12.03.2018
VW	13.03.2018
DD	23.09.2019

CLIENT:  
**AMJ DEMOLITION &  
EXCAVATION**

PROJECT TITLE:  
**55 MARTIN RD BADGERY'S CREEK  
WASTE RESOURCE RECOVERY FACILITY**

DRAWING TITLE:  
**VISUAL IMPACT ASSESSMENT-VIEW 5**

NORTH POINT:	DRAWN BY:	VW / DD
	CHECKED BY:	PI
	SCALE:	N.T.S. @ A3
	PROJECT No:	P513
DA	23	C
stage.	dwg no.	revision





1

VIEW 6

REV	DESCRIPTION
A	ISSUE FOR INFORMATION
B	ISSUE FOR INFORMATION
C	VIEW REGENERATED TO AMENDED SCHEME. ISSUED FOR AMENDMENT TO APPROVED DA-263/2018

BY	DATE
VW	12.03.2018
VW	13.03.2018
DD	23.09.2019

CLIENT:  
**AMJ DEMOLITION &  
EXCAVATION**

PROJECT TITLE:  
**55 MARTIN RD BADGERY'S CREEK  
WASTE RESOURCE RECOVERY FACILITY**

DRAWING TITLE:  
**VISUAL IMPACT ASSESSMENT-VIEW 6**

NORTH POINT:	DRAWN BY:	VW / DD
	CHECKED BY:	PI
	SCALE:	N.T.S. @ A3
	PROJECT No:	P513
DA	24	C
stage.	dwg no.	revision